

N28

Agentic Automation. Perfected.

N28

Transforming Business Efficiency through Custom AI Agents



Executive Summary

N28 is a leader in Agentic Automation, providing tailored AI solutions that revolutionize how businesses operate. This whitepaper outlines our approach, technology, and the significant value we bring to organizations seeking to optimize their processes and drive growth.

1. Understanding AI Agents: The Future of Business Automation

1.1 What is an AI Agent?

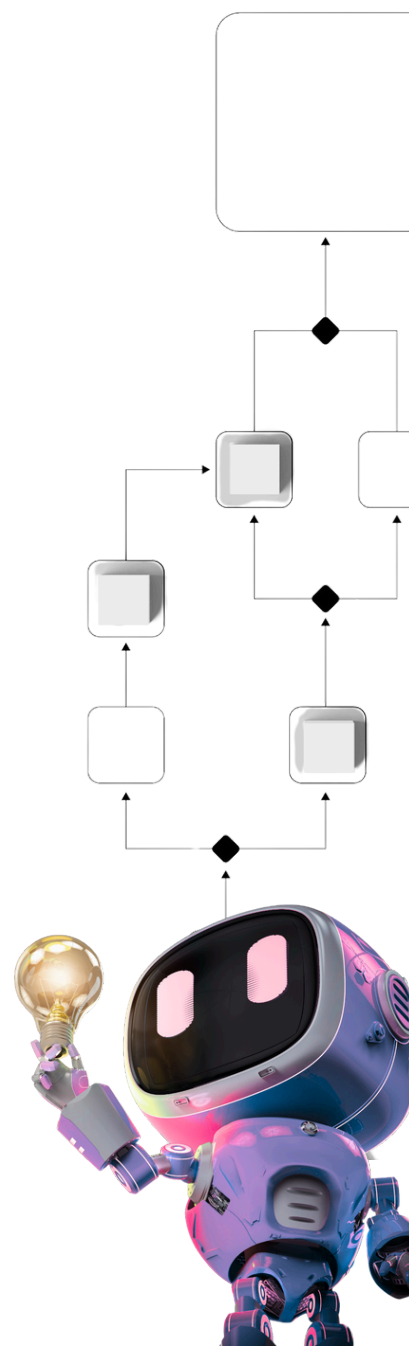
- An AI agent is an autonomous software entity powered by artificial intelligence that can perceive its environment, make decisions, and take actions to achieve specific goals. Unlike traditional software, AI agents can learn, adapt, and operate with a degree of independence, making them invaluable tools for modern businesses.

1.2 The Evolution of AI Agents:

- AI agents have their roots in early artificial intelligence research. However, recent advancements in machine learning, natural language processing, and computational power have transformed them from theoretical concepts to practical, real-world solutions. Today's AI agents can handle complex tasks, from data analysis to customer service, with unprecedented efficiency.

1.3 Why Modern Organizations Need AI Agents:

- **Efficiency:** AI agents can handle repetitive tasks at scale, freeing human resources for strategic work.
- **24/7 Operation:** Unlike human employees, AI agents can work continuously without fatigue.
- **Consistency:** AI agents perform tasks with unwavering consistency, reducing errors and improving quality.
- **Scalability:** As businesses grow, AI agents can easily scale to handle increased workloads.
- **Data-Driven Insights:** AI agents can process and analyze vast amounts of data, providing valuable insights for decision-making.
- **Cost-Effectiveness:** Over time, AI agents can significantly reduce operational costs.



2.N28 Pioneering Custom AI Agents for Business

At N28, we build custom AI agents designed to handle repetitive tasks, manage workflows, and keep operations running smoothly. Our agents leverage the power of AI with the unique ability to take action in ways that make sense for each individual company.

2.2 The N28 Process:

a) Understanding Your Operations:

We start by mapping out your business processes, identifying repetitive tasks, operational challenges, inefficiencies, and opportunities for optimization. This gives us a clear picture of the data and tools you're already using.

b) Agent Design:

Once we understand your workflow, we design agents specifically for your needs. These aren't off-the-shelf solutions you have to bend your business around. They're built to fit how you already work, integrating directly into your existing systems.

c) Implementation:

After the agents are ready, we deploy them into your workflows and run tests to ensure they're working as expected. We refine as needed to ensure everything runs reliably.

d) Optimization and Scaling:

As your business evolves, so can your agents. We can add new capabilities, expand their functions, or bring in more agents to handle additional operations. The system is designed to grow with you, making it easy to scale without overhauling everything.



3. Ongoing Support and Evolution

What sets N28 apart is our commitment to long-term partnership. We don't just set up the system and disappear. AI evolves, your business evolves, and what worked a year ago might need tweaking today. That's why we remain involved, helping you adjust and improve as your needs change or as new AI capabilities emerge.

4. Practical Solutions, Real Results

At N28, we cut through the noise in the AI space. We focus on building tools that genuinely make a difference, whether that's saving your team hours on routine tasks or helping you scale your company. Our priority is delivering practical solutions that work.

5. How We Engage with Clients

5.1 Consulting Expertise: For businesses just starting to explore AI agents, we provide guidance to understand your operations, identify high-impact areas for agents, and develop a clear integration roadmap.

5.2 Custom Agent Development: For those ready to implement, we design, build, and deploy custom AI agents tailored to your specific needs and use cases.

Agentic Automation.



6. Our Strategy Development Process

At N28, we follow a rigorous and comprehensive strategy development process to ensure that our AI agent solutions are perfectly tailored to each client's unique needs. This process, developed by our team, consists of four key phases:

6.1 Discovery & Needs Assessment

For businesses just starting to explore AI agents, we provide guidance to understand your operations, identify high-impact areas for agents, and develop a clear integration roadmap.

This initial phase is crucial for developing a complete understanding of the organization's current state, workflows, and goals.

Key activities include:

- Executive Kickoff Meetings:

We identify key team members, understand the organizational structure, and align with the company's goals.

- Key Player Exploratory Meetings:

We conduct in-depth interviews with team leaders to understand roles, workflows, pain points, and aspirations.

- Web Activity Tracking:

We implement tools to accurately assess time spent on various platforms, establishing a benchmark for our multi-agent system.



6.2 Analysis

In this phase, we break down the collected data into actionable insights, uncovering inefficiencies, gaps, and opportunities.

Key activities include:

- Revenue & Expenses Audit:

We identify revenue drivers and ROI per workflow, focusing on tech stack and employee costs.

- Org Chart Breakdown:

We analyze roles, responsibilities, and team structure to identify redundancies and bottlenecks.

- Web Activity Data Analysis:

We create mind maps of workflows and data flow, looking for opportunities to centralize data and consolidate the tech stack.

- Executive Goal Alignment:

We ensure our findings align with leadership goals.

6.3 Solution Design

Based on our comprehensive analysis, we design a tailored implementation solution.

Key components include:

- Data Strategy: We outline how data will be handled and utilized by AI agents.
- Tech Stack Integration: We design how our AI agents will integrate with existing systems.
- Super Agents: We develop specifications for custom AI agents tailored to the organization's needs.
- UI/UX Design: We create user-friendly interfaces for interaction with AI agents.
- Cost Estimation: We provide a detailed breakdown of implementation costs.
- Goal Alignment & ROI Expectations: We clearly outline how our solution aligns with organizational goals and expected return on investment



6.4 Implementation Proposal

The final phase involves delivering a clear, actionable roadmap for implementation.

Key deliverables include:

- **Comprehensive Proposal Deck:** This includes a presentation of our findings, a walkthrough of the proposed solution, and a step-by-step roadmap with milestones, timelines, and deliverables.
- **Cost-Benefit Analysis:** We demonstrate the expected ROI of our AI agent implementation

7. Custom Development & Implementation

At N28, we understand that the true value of AI lies not in abstract concepts, but in practical, tangible solutions that drive real business results. Our custom development and implementation process is designed to turn AI potential into operational reality.

Key Principles:

- **Scalability Without Headcount Increase:** Our multi-agent operating system is designed to help businesses scale operations without necessarily adding to their headcount.
- **Seamless Integration:** We integrate our solutions into existing operations, ensuring they become a natural part of daily work rather than an additional technological burden.
- **Focus on Frameworks:** Rather than relying on a multitude of tools, we focus on the underlying frameworks of AI Agent Development & Architecture.
- **Continuous Iteration:** We understand that AI is an evolving field. Our approach involves constant updating and iteration to stay at the forefront of AI adoption.



And much more...

Data-Driven Approach

We place a strong emphasis on data in our implementation process. Our systems generate daily insights into performance, allowing us to make informed adjustments for optimal results. We regularly review key performance indicators to identify opportunities for improvement.

Incremental Refinement

Our philosophy is based on the power of incremental improvements. We believe that a series of small, strategic tweaks can lead to significant gains over time. This approach allows for steady, compounding progress without disruptive overhauls.

Industry Awareness

We dedicate considerable resources to staying abreast of developments in the AI industry. This allows us to keep our clients informed and ensure our solutions remain cutting-edge.

Practical ROI Focus

While we're excited about the potential of AI, our primary focus is on delivering tangible ROI for our clients. We're committed to building practical multi-agent systems that lead to measurable business improvements.

The N28 Difference

What sets us apart is our deep understanding of AI's current capabilities, its future potential, and how to implement it effectively in business contexts. We've developed a robust framework based on our convictions about AI, allowing us to navigate this rapidly evolving field with confidence.

We recognize that many businesses are eager to implement AI but are unsure where to start or are hesitant due to the fear of making the wrong decision. Our experience across various implementations has given us the insight to guide businesses through this process effectively.

If you're ready to move beyond analysis-paralysis and start implementing AI agents in your business, we encourage you to reach out. Our team at N28 is prepared to provide the answers and solutions you've been seeking, helping you harness the power of AI to drive your business forward in 2025 and beyond.